

WOLFFKRAN

ARABIA

Slewing tower crane WOLFF 355 B



www.wolffkranarabia.com

OUR OFFICE

PO Box 116 248
OFFICE NO. 1102,
ICON TOWER, TECOM
Dubai, United Arab Emirates

CONTACT US

Phone: +9 714 432 13 46
Fax: +9 714 432 13 47
E-Mail: info@wolffkran.com

Schedule drawing WOLFF 355 B

DATA SHEET

WOLFF 355 B Kollli Liste - Colli List - Liste de colisage

Pos. Stk.	Beschreibung / Description / Description	Kollli / Colli / Colis	L (m) Length Longueur	B (m) Width Largeur	H (m) Height Hauteur	Gewicht (kg) Weight Poids	Volumen (m³) Volume Volume
1	1 Turmspitzenoberteil / Tower top upper part / Porte-fèche		13,36	2,30	2,52	9800	77,44
2	1 Turmspitzenunterteil kompl. / Tower top lower part complete / Pivot tournant complète Turmspitzenunterteil / Tower top lower part / Pivot tournant		7,96	2,30	2,53	15300	46,32
			5,63	2,30	2,53	11700	32,76
3	1 Führerhaus mit Aufhängung / Driver's cabin with suspension / Cabine avec fixation		2,26	1,45	2,30	940	7,54
4	1 Gegenausleger komplett/ Counterjib complete / Contre-fèche complète Maschinenplattform / Machinery platform / Plateforme avec mécanisme de levage Hw 28110FU (mit Hubschleif / with hoisting rope / avec le câble de levage 026 mm x 920 m = 3036 kg) Hw 28132FU (mit Hubschleif / with hoisting rope / avec le câble de levage 026 mm x 920 m = 3036 kg und 2. Bremse / and 2nd brake / et 2ème frein)		6,58	2,30	0,93	5150	14,08
			2,31	2,19	2,41	8200	12,12
			2,98	2,56	2,81	11196	21,44
5	1 Auslegerteil 1 / Jib part 1 / Élément de fèche 1		11,92	2,22	2,00	2250	52,93
6	1 Auslegerteil 2 mit WOLFF Schild / Jib part 2 with WOLFF plate / Élément de fèche 2 avec panneau WOLFF		10,56	1,71	1,96	1710	35,40
7	2 Auslegerteil 2 / Jib part 2 / Élément de fèche 2		10,56	1,71	1,96	1630	35,40
8	1 Auslegerteil 3 / Jib part 3 / Élément de fèche 3		5,39	1,71	1,96	960	18,07
9	1 Auslegerteil 4 / Jib part 4 / Élément de fèche 4		5,39	1,71	1,96	930	18,07
10	1 Auslegerteil 5 / Jib part 5 / Élément de fèche 5		10,16	1,71	1,99	2020	34,58
11	5 Abspannlaschen / Bracing brackets / Tirants		10,51	0,24	0,61	1350	1,54
12	1 Unterflasche 28 t / Hook block 28 t / Crochet 28 t		0,68	0,26	1,63	540	0,29
13	1 Kiste (Kleinteile) / Box (small parts) / Caisse à outils		1,60	0,90	0,80	300	1,15



OUR OFFICE

PO Box 116 248
OFFICE NO. 1102,
ICON TOWER, TECOM
Dubai, United Arab Emirates

CONTACT US

Phone: +9 714 432 13 46
Fax: +9 714 432 13 47
E-Mail: info@wolffkran.com

Schedule drawing WOLFF 355 B

DATA SHEET

Main Components

30 m basic jib. Extensions up to 60 m radius in 5 m steps. Tower top with luffing winch. Slewing frame with driver's cabin, control cabinet, slewing gear, ball race bearing with central lubrication unit and slipping system. Counterjib with hoisting winch and counterweights.

Drive Technique

All drives frequency controlled squirrel cage motors, fully thermal protected. Hoisting winch Hw2110FU / Hw2132FU. Slewing gear with electrically operated weathervaning device. Automatic windforce compensation controls. Luffing winch Ew 1575 FU.

Electrical Equipment

Multivoltage equipment for supplies from 380 V to 460 V at 50 / 60 cycles. Electronic safety crane controls with bus technology. Incremental absolute encoders for all operating movements. Electronic load measuring device. Multilingual graphic display showing information to operator, both operational and diagnostics.

Safety Devices

Electronic overload protection system. Increased load moment limitation by automatically hoisting speed reduction. Menu guided setting of overload protection system and of all limiters from operators cabin. Working space limiter. Anti collision interface. Electronic controlled level luffing.

Tower Elements, Climbing Device

Tower configuration of WOLFF system tower elements. WOLFF slug bolt connection. Detachable hydraulic WOLFF system climbing device KWH 20.6.

Undercarriage UW

WOLFF system undercarriage UW can be used with gauge from 6,0 up to 8,0 m.

Cross Frame Element KRE, Cross Frame KR

For stationary installation. KRE elements can be modified to UW.

Power Requirements and hook paths (Slewing part)

194 kVA with Hw 28110 FU, hook path 460 m in 2-fall operation.
205 kVA with Hw 28132 FU, hook path 460 m in 2-fall operation.

Antrieb - WOLFF 355 B - (Hw 28110 FU)					
Mechanisms Mécanismes					
Motor (kW) Moteur	110	110	75.0	7.5	6 x 5.5
Geschwindigkeit speed Vitesse	0 - 25.1 0 - 180 min stufenlos / stepless / en continu 0 - 14.0 l 0 - 40 min	0 - 5.51 0 - 50 min stufenlos / stepless / en continu 0 - 28.0 l 0 - 20 min	1.80 min	0.80 min	25.0 min
Hakenweg (m) hook path course du crochet	900	460			

Antrieb - WOLFF 355 B - (Hw 28132 FU)					
Mechanisms Mécanismes					
Motor (kW) Moteur	132	132	75.0	7.5	6 x 5.5
Geschwindigkeit speed Vitesse	0 - 17.1 0 - 200 min stufenlos / stepless / en continu 0 - 14.0 l 0 - 48 min	0 - 4.01 0 - 140 min stufenlos / stepless / en continu 0 - 28.0 l 0 - 25 min	1.80 min	0.80 min	25.0 min
Hakenweg (m) hook path course du crochet	900	460			

Traglaster (t) - WOLFF 355 B										
Load Data										
Charges										
Ausladung (m) / jib radius (m) / Portée (m)		20	25	30	35	40	45	50	55	60
60	5.4 - 27.0	14.0	14.0	12.2	9.8	8.1	6.7	5.6	4.7	4.0
55	5.0 - 26.0	14.0	14.0	12.0	10.5	8.7	7.3	6.2	5.3	
50	4.5 - 26.5	14.0	14.0	13.7	11.3	9.5	8.1	7.0		
45	4.1 - 31.0	14.0	14.0	14.0	12.2	10.4	9.0			
40	3.8 - 33.5	14.0	14.0	14.0	13.4	11.8				
35	3.2 - 34.5	14.0	14.0	14.0	13.8					
30	2.7 - 30.0	14.0	14.0	14.0						
60										
55										
50	4.5 - 16.0	21.7	18.7	13.6	11.0	9.2	7.8	6.7		
45	4.1 - 16.5	22.7	17.8	14.3	11.9	10.1	8.7			
40	3.8 - 17.0	23.8	18.7	15.4	13.1	11.3				
35	3.2 - 17.5	24.4	19.3	15.9	13.8					
30	2.7 - 18.0	25.3	20.3	17.0						



OUR OFFICE

PO Box 116 248
OFFICE NO. 1102,
ICON TOWER, TECOM
Dubai, United Arab Emirates

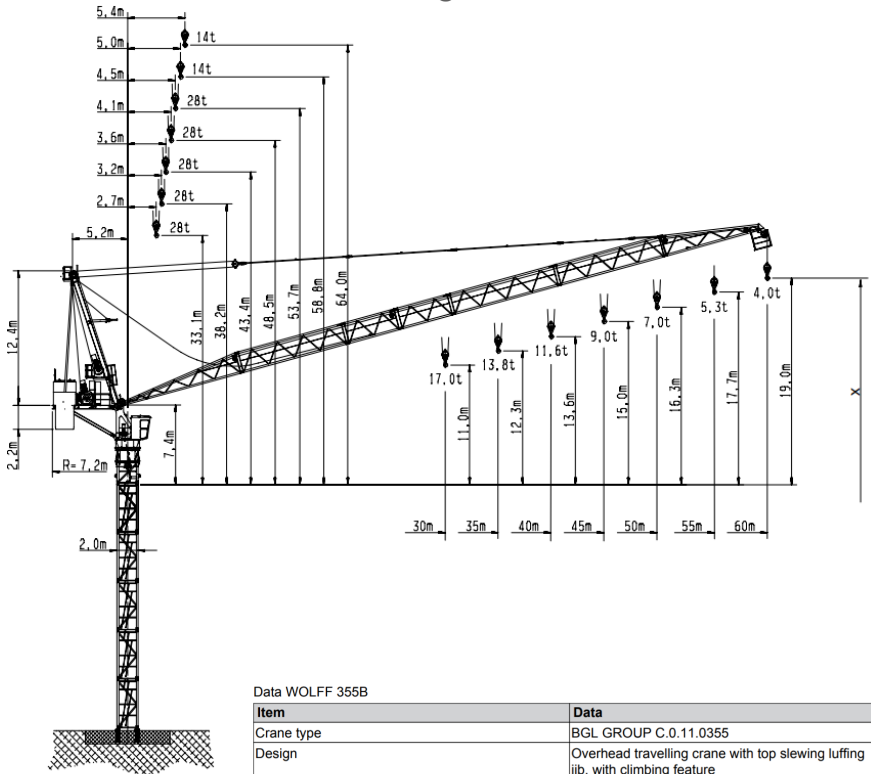
CONTACT US

Phone: +9 714 432 13 46
Fax: +9 714 432 13 47
E-Mail: info@wolffkran.com

WOLFFKRAN

ARABIA

Schedule drawing WOLFF 355 B



Data WOLFF 355B

Item	Data
Crane type	BGL GROUP C.0.11.0355
Design	Overhead travelling crane with top slewing luffing jib, with climbing feature
Type of setup	Stationary or traveling
Basis of calculation	EN
Load moment	max. 5100 kNm
Hoist winch	Hw 28110FU / Hw 28132FU



www.wolffkranarabia.com

OUR OFFICE

PO Box 116 248
OFFICE NO. 1102,
ICON TOWER, TECOM
Dubai, United Arab Emirates

CONTACT US

Phone: +9 714 432 13 46
Fax: +9 714 432 13 47
E-Mail: info@wolffkran.com